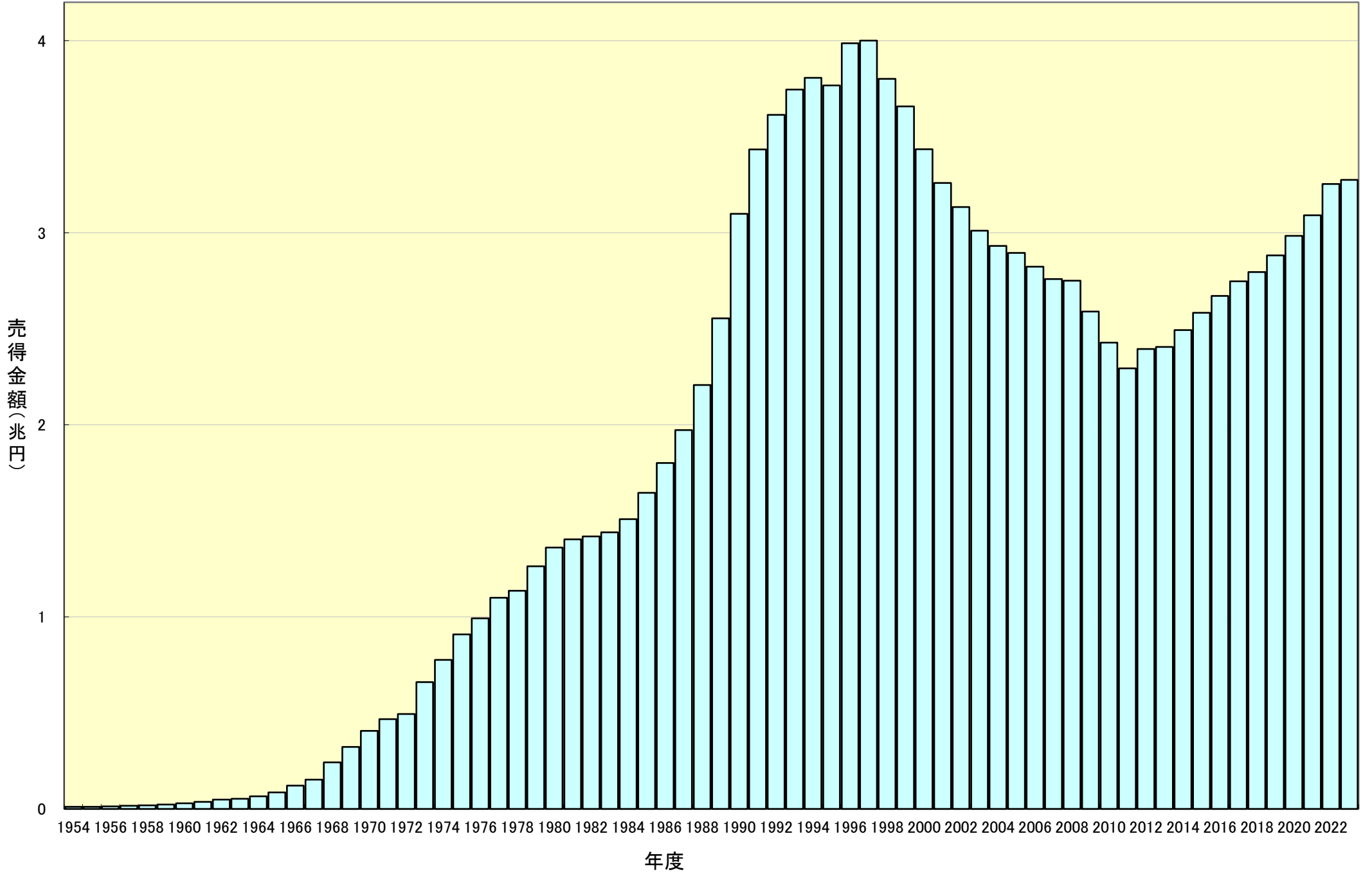


売得金額・総参加人員

西暦	元号 (昭和・平成・令和)	売得金額(円) 〈〉内数字は、対前年比	総参加人員(名) 〈〉内数字は、対前年比 ※1982年以前はデータなし	開催場入場人員(名) 〈〉内数字は、対前年比
1954	29	11,229,310,000	-	1,694,738
1955	30	11,097,415,300 <98.8%>	-	1,568,613 <92.6%>
1956	31	13,839,565,800 <124.7%>	-	1,535,367 <97.9%>
1957	32	16,397,446,400 <118.5%>	-	1,708,963 <111.3%>
1958	33	18,977,003,700 <115.7%>	-	1,820,969 <106.6%>
1959	34	22,841,945,700 <120.4%>	-	1,904,059 <104.6%>
1960	35	29,004,018,800 <127.0%>	-	2,244,705 <117.9%>
1961	36	37,315,982,600 <128.7%>	-	2,684,846 <119.6%>
1962	37	48,540,848,300 <130.1%>	-	3,361,752 <125.2%>
1963	38	53,513,566,200 <110.2%>	-	3,255,543 <96.8%>
1964	39	65,401,749,600 <122.2%>	-	3,464,837 <106.4%>
1965	40	86,650,971,000 <132.5%>	-	4,272,506 <123.3%>
1966	41	121,827,869,300 <140.6%>	-	5,378,944 <125.9%>
1967	42	152,754,158,800 <125.4%>	-	6,138,084 <114.1%>
1968	43	242,879,978,300 <159.0%>	-	8,445,782 <137.6%>
1969	44	322,929,843,800 <133.0%>	-	10,982,444 <130.0%>
1970	45	406,988,821,500 <126.0%>	-	12,234,656 <111.4%>
1971	46	467,884,083,100 <115.0%>	-	13,159,809 <107.6%>
1972	47	494,601,258,500 <105.7%>	-	12,760,238 <97.0%>
1973	48	660,542,374,000 <133.6%>	-	14,755,945 <115.6%>
1974	49	776,460,912,200 <117.5%>	-	14,627,092 <99.1%>
1975	50	908,364,665,100 <117.0%>	-	14,898,794 <101.9%>
1976	51	992,722,691,400 <109.3%>	-	13,506,306 <90.7%>
1977	52	1,099,161,284,100 <110.7%>	-	13,110,750 <97.1%>
1978	53	1,136,476,864,300 <103.4%>	-	11,970,174 <91.3%>
1979	54	1,263,830,648,200 <111.2%>	-	11,053,686 <92.3%>
1980	55	1,360,786,588,400 <107.7%>	-	10,633,217 <96.2%>
1981	56	1,404,055,597,100 <103.2%>	-	10,611,857 <99.8%>
1982	57	1,418,436,746,300 <101.0%>	-	10,179,731 <95.9%>
1983	58	1,440,144,612,000 <101.5%>	-	9,026,833 <88.7%>
1984	59	1,508,924,979,400 <104.8%>	80,530,181 <->	8,366,516 <92.7%>
1985	60	1,645,859,566,200 <109.1%>	85,794,495 <106.5%>	8,061,628 <96.4%>
1986	61	1,801,353,251,400 <109.4%>	89,087,408 <103.8%>	7,956,099 <98.7%>
1987	62	1,973,142,190,200 <109.5%>	92,209,164 <103.5%>	7,920,304 <99.6%>
1988	63	2,206,748,410,600 <111.8%>	96,168,082 <104.3%>	8,251,575 <104.2%>
1989	元	2,554,520,163,200 <115.8%>	103,075,138 <107.2%>	9,139,149 <110.8%>
1990	2	3,098,457,259,500 <121.3%>	116,280,592 <112.8%>	10,687,344 <116.9%>
1991	3	3,433,803,211,700 <110.8%>	132,207,973 <113.7%>	12,161,942 <113.8%>
1992	4	3,613,879,230,800 <105.2%>	142,947,834 <108.1%>	13,159,521 <108.2%>
1993	5	3,745,416,527,000 <103.6%>	153,019,191 <107.0%>	13,757,240 <104.5%>
1994	6	3,806,592,292,500 <101.6%>	160,361,629 <104.8%>	13,529,383 <98.3%>
1995	7	3,766,602,180,700 <98.9%>	158,438,720 <98.8%>	14,059,098 <103.9%>
1996	8	3,986,228,211,400 <105.8%>	167,376,994 <105.6%>	14,116,684 <100.4%>
1997	9	4,000,661,663,100 <100.4%>	167,385,441 <100.0%>	13,003,919 <92.1%>
1998	10	3,801,217,640,600 <95.0%>	163,181,051 <97.5%>	12,239,465 <94.1%>
1999	11	3,657,242,066,800 <96.2%>	161,910,564 <99.2%>	11,409,453 <93.2%>
2000	12	3,434,757,500,600 <93.9%>	157,805,186 <97.5%>	11,030,412 <96.7%>
2001	13	3,258,696,881,300 <94.9%>	155,465,694 <98.5%>	9,701,126 <87.9%>
2002	14	3,133,485,421,600 <96.2%>	162,130,745 <104.3%>	8,712,336 <89.8%>
2003	15	3,010,343,479,600 <96.1%>	167,063,164 <103.0%>	8,507,076 <97.6%>
2004	16	2,931,433,543,600 <97.4%>	167,094,643 <100.0%>	8,099,985 <95.2%>
2005	17	2,894,585,479,800 <98.7%>	169,044,180 <101.2%>	8,117,242 <100.2%>
2006	18	2,823,309,442,000 <97.5%>	169,389,037 <100.2%>	7,508,297 <92.5%>
2007	19	2,759,138,078,900 <97.7%>	171,438,408 <101.2%>	7,532,111 <100.3%>
2008	20	2,750,200,990,400 <99.7%>	177,680,929 <103.6%>	7,389,749 <98.1%>
2009	21	2,590,073,500,000 <94.2%>	173,698,393 <97.8%>	7,316,360 <99.0%>
2010	22	2,427,565,594,700 <93.7%>	168,358,160 <96.9%>	6,739,580 <92.1%>
2011	23	2,293,578,053,600 <94.5%>	157,088,673 <93.3%>	6,151,105 <91.3%>
2012	24	2,394,308,856,700 <104.4%>	162,390,848 <103.4%>	6,190,296 <100.6%>
2013	25	2,404,933,513,200 <100.4%>	160,255,552 <98.7%>	6,092,403 <98.4%>
2014	26	2,493,627,729,400 <103.7%>	163,779,677 <102.2%>	6,142,471 <100.8%>
2015	27	2,583,391,869,800 <103.6%>	165,859,812 <101.3%>	6,317,073 <102.8%>
2016	28	2,670,880,261,600 <103.4%>	170,301,035 <102.7%>	6,300,662 <99.7%>
2017	29	2,747,662,484,800 <102.9%>	177,721,162 <104.4%>	6,175,238 <98.0%>
2018	30	2,795,008,304,000 <101.7%>	178,175,447 <100.3%>	6,266,912 <101.5%>
2019	元	2,881,788,661,700 <103.1%>	182,296,332 <102.3%>	6,236,197 <99.5%>
2020	2	2,983,455,872,000 <103.5%>	168,115,273 <92.2%>	990,970 <15.9%>
2021	3	3,091,112,025,800 <103.6%>	178,108,494 <105.9%>	722,670 <72.9%>
2022	4	3,253,907,076,200 <105.3%>	196,802,493 <110.5%>	2,790,937 <386.2%>
2023	5	3,275,467,900,700 <100.7%>	196,701,238 <99.9%>	4,624,106 <165.7%>

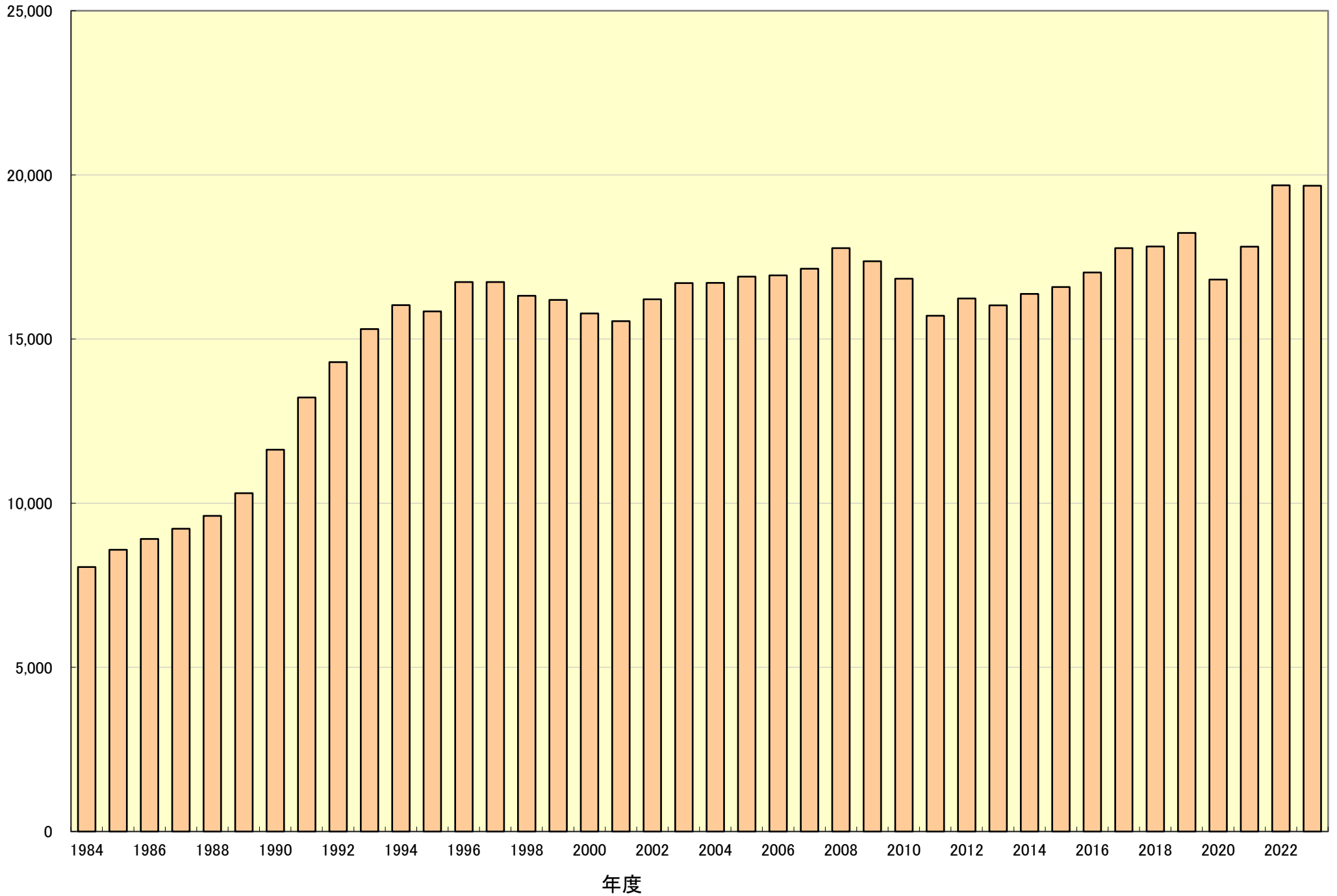
# 売得金額



# 総参加人員

※1982年以前はデータなし

総参加人員(万名)



# 開催場入場人員

